

Double Flanged Eccentric Plug Valve BS 5163 F-F Dimensions Sizes 80mm - 300mm



FLANGES TO EN 1092-2: 1997 PN16

Use:

Potable, Waste water & Sewage

Tests:

Seat: 1.1 x PN
Body: 1.5 x PN
Temperature range: -10°C to 70°C
(Insulate at 0°C and below)

Accessories:

Wrench operation
Gearbox
ISO Mounting Flange

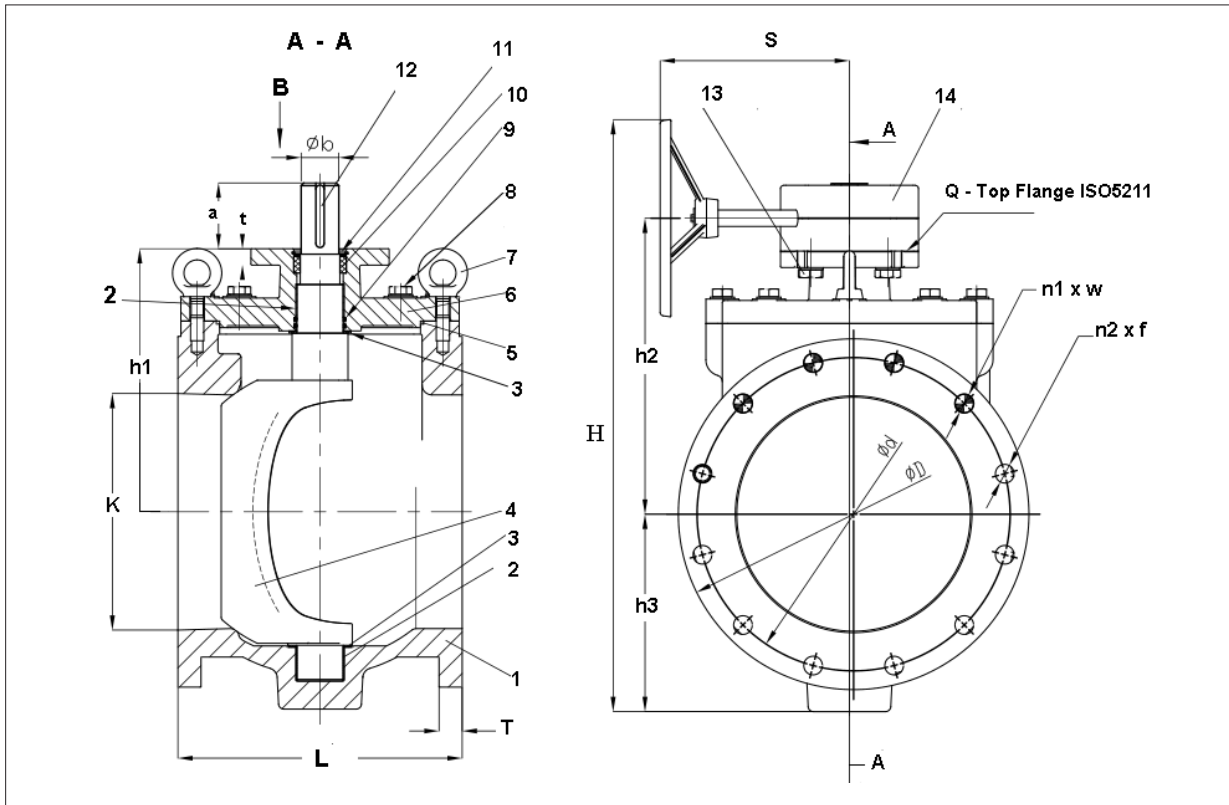
Materials:

1 Body	Cast iron	GGG25
2 Sleeve	SS304 & PTFE	
3 Washer	PTFE	
4 Plug	Ductile iron	GGG50
5 Cover seal	O-ring	NBR/EPDM
6 Cover	Cast iron	GGG25
7 Lift lug	H.T Steel Galvanised	
8 Bolts	Stainless steel	A2
9 Stem seal	O-ring	EPDM
10 Stem seal	U-cup	NBR/EPDM
11 Lock washer	Stainless steel	304
12 Key	Stainless steel	304
13 Gearbox bolt	Stainless steel	304
14 Gearbox	Cast iron	GGG25

Key Features:

- Unique compact ROUND port design providing full flow and reduced head loss.
- Cast Iron Body with a Ductile Iron Plug full encapsulated in elastomer - Nitrile / EPDM.
- Conforms to BS 5163 Face-Face dimensions.
- Fully 16 Bar rated with bi-directional operation up to 10 bar.
- Supplied with 2" cap top in sizes up to 200mm as standard and with gearbox as standard on larger sizes.
- Fitted with ISO mounting top to allow easy actuation or gearbox fitment by means of a simple spacer flange.
- Welded Nickel Seat for long life service.
- Flanges drilled PN16 as standard - with top holes tapped for quick and easy assembly.
- Cover Bolts, Locking Bolt and memory position indicator all in stainless steel - grade A2.
- Coated in high build blue epoxy - RAL 5005 for excellent corrosion protection in aggressive environments.

CAST IRON DOUBLE FLANGED ECCENTRIC PLUG VALVE



Item	Description	Material
1	Body	Cast Iron GG25
2	Sleeve Bearing	SS304 + PTFE
3	Washer	PTFE
4	Plug	Ductile Iron Fully Lined
5	O-Ring	NBR/EPDM
6	Cover	Cast Iron GG25
7	Lift Lug	Galv. HT Steel
8	Bolts	SS-A2

Item	Description	Material
9	O-Rings	EPDM
10	U-Cup Seals	NBR/EPDM
11	Lock Washer	SS-304
12	Key	SS-304
13	Gearbox Bolt	SS-A2
14	Gearbox	Cast Iron GG25
15	Coating	300 Mic Epoxy

GENERAL DIMENSIONS (mm)														Shaft		ISO	Kg		
DN	L	K	T	D	d PCD	n1	w	n2	f	H	h1	h2	h3	S	a	b	Q	with 2" Sq. Top	with 2" Sq. Top
80mm	203mm	76	19	200	160	2	M16	4	18	355	139	184	89	195	46	25	F07	21	26
100mm	229mm	103	24	220	180	2	M16	6	18	508	166	236	115	328	52	30	F10	32	39
150mm	267mm	152	25	285	240	2	M20	6	22	537	200	271	145	328	52	30	F10	50	59
200mm	292mm	203	28	340	295	2	M20	6	22	695	273	343	194	328	56	40	F10	92	115
250mm	330mm	240	30	400	355	4	M24	8	27	757	303	373	225	328	72	40	F14	120	145
300mm	356mm	264	32	455	410	4	M24	8	27	886	351	436	254	328	72	50	F16	178	203

“The perfect solution for isolation and control in sewage and waste water pipelines”