

HiVent Double Orifice Air Release & Vacuum Valve Fig.8340



WRAS
APPROVED
PRODUCT

Function & features:

- Double orifice air valve that combines both large orifice & small orifice functions within one unit. The large orifice allows air to be expelled from the system during filling of a pipeline and admit air back into the system whenever sub-atmospheric pressure occurs. Air is vented from the system until water enters the valve and lifts the float against its seat, ensuring a tight seal. In the event of sub-atmospheric pressure in the system, the water level drops causing the float to fall from its seat and allow the admission of air.
- During normal working of the main the small orifice releases the air which accumulates under pressure. With the main in operation, the float is normally against its seat. As air enters the chamber body the water level is depressed until a level is reached when the float drops from its seat, which allows air to escape. The consequent rise in water level returns the float to its seat
- 25mm (1") - 200mm (8") sizes.
- WRAS approved.

Service conditions:

- Potable water, filtered water.
- Working pressures 0.2 bar up to 16 bar.
- Temperature range 0°C to +70°C. (insulate 0°C and below).

Tests:

- Seat 1.1 x PN Body 1.5 x PN

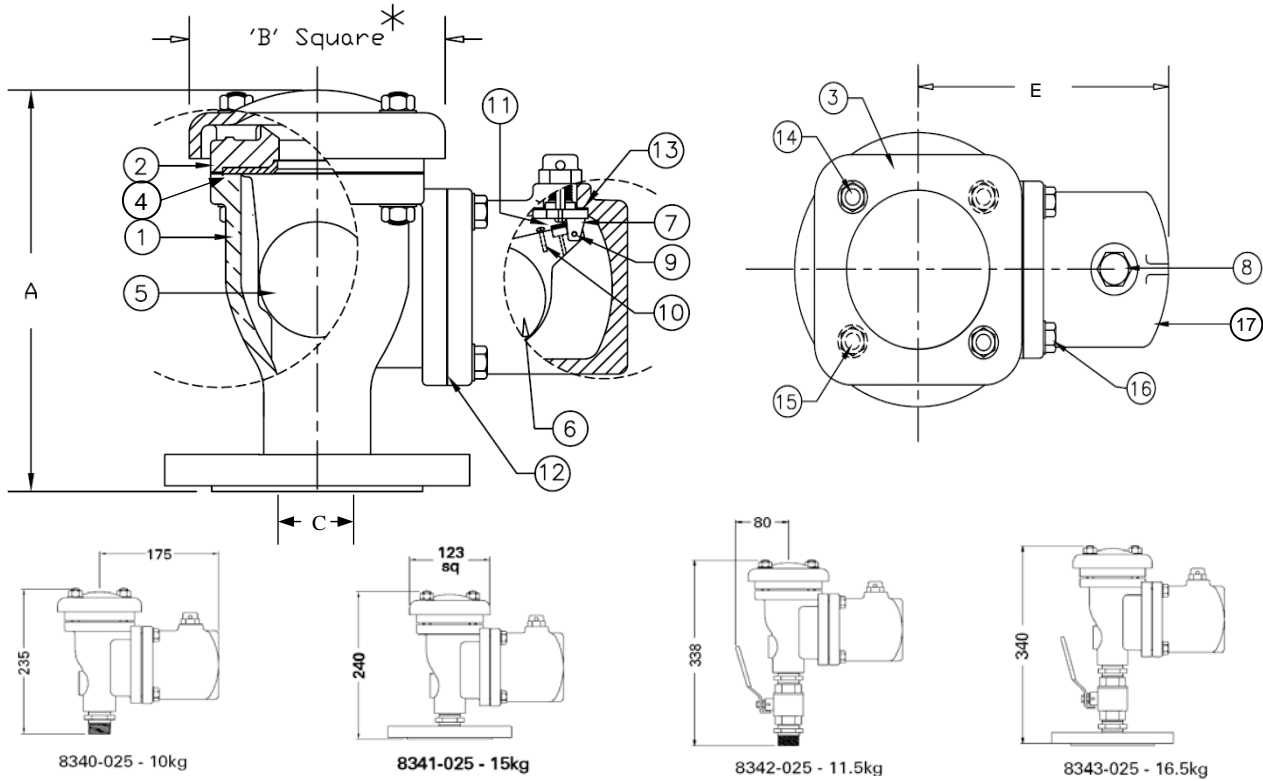
Accessories / Options:

- Various materials available for sea water or corrosive applications.
- Various flange drillings.
- Screwed or flanged outlet facility.
- Viton rubber seat.
- Metal float options.
- Surge arrestor, inflow / outflow check device, vented non-return device, adjustable throttle device.
- Bib tap / test point.
- Isolating valve.
- 25 bar version.
- 40 bar version (on 25mm only).

Materials:

No.	Description	Material
1.	Body	Ductile iron ENGJS-500-7
2.	Cover	Ductile iron ENGJS-500-7
3.	Shield plate	Ductile iron ENGJS-500-7
(Spun steel on 150 & 200mm)		
4.	Large orifice seat	EPDM rubber
5.	Large orifice float	ABS plastic
6.	Small orifice float	ABS plastic
7.	Orifice plug	Glass filled nylon 6
8.	Orifice nut	Glass filled nylon 6
9.	Hinge pin	316 Stainless steel
10.	Stop screw	316 Stainless steel
11.	Small orifice seal	EPDM rubber
12.	Chamber O-ring	EPDM rubber
13.	Gasket, orifice plug	EPDM rubber
14.	Shield studs & nuts	304 Stainless steel
15.	Cover bolts & nuts	304 Stainless steel
16.	Chamber setscrews	304 Stainless steel
17.	Chamber	Ductile iron ENGJS-500-7

HiVent Double Orifice Air Release & Vacuum Valve Fig.8340. Product Data Sheet AV 4.4 to 4.9

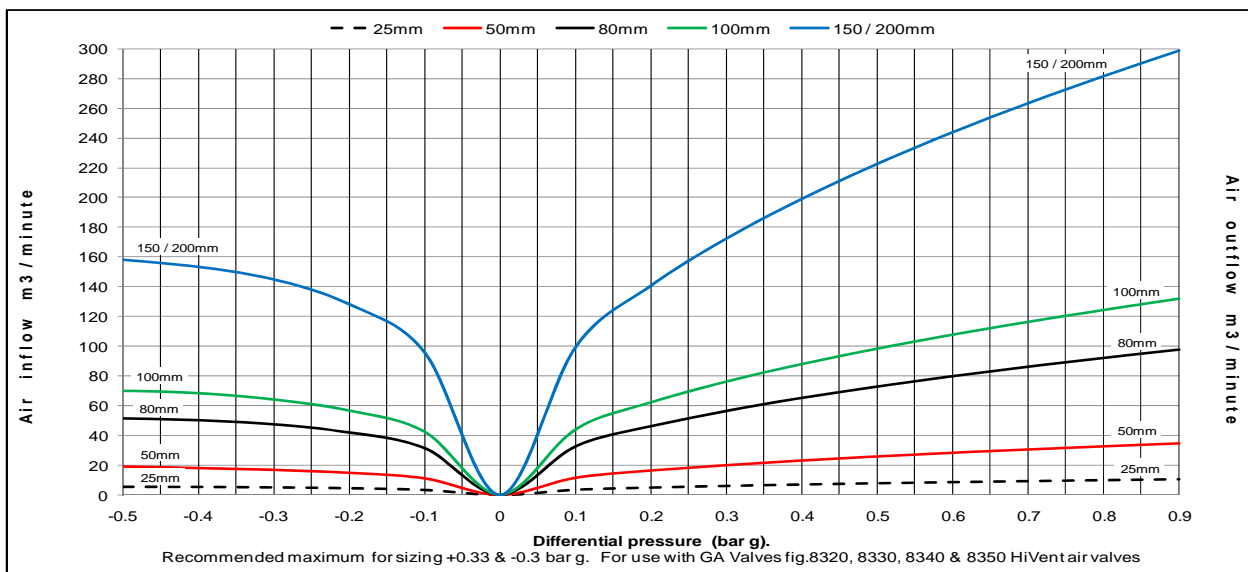


Valve size	A mm	B mm	C mm	E mm	Outlet mm	Weight kg	Max main diameter to be used with
25	See 8340, 8341, 8342 & 8343-025						300mm
50	260	162	50	203	50	18	450mm
80	260	162	80	203	50	20	450mm
80	365	229	80	228	80	30	700mm
100	437	266	100	246	100	36	900mm
150	525	440	150	290	150	66	1200mm
200	535	440	200	290	150	76	1200mm

Model figure numbers:

- Fig.8340 - Standard valve with flanged inlet (screwed 1" BSP on 1" size valve).
- Fig.8341 - 1" with inlet flange.
- Fig.8342 - 1" with Isolating ball valve.
- Fig.8343 - 1" with isolating ball valve & inlet flange.
- Fig.8350 - PN25 rated valve with flanged inlet.
- Suffix 'P' for screwed outlet.

* Round on 150mm & 200mm size air valves.



GA VALVES SALES LTD
 JOHNSTONE HOUSE
 BIRDS ROYD LANE
 BRIGHOUSE
 WEST YORKSHIRE, HD6 3UD



TEL: 01484 711983
 FAX: 01484 719848
 EMAIL: sales@gavalves.co.uk
 WEB: www.gavalves.co.uk